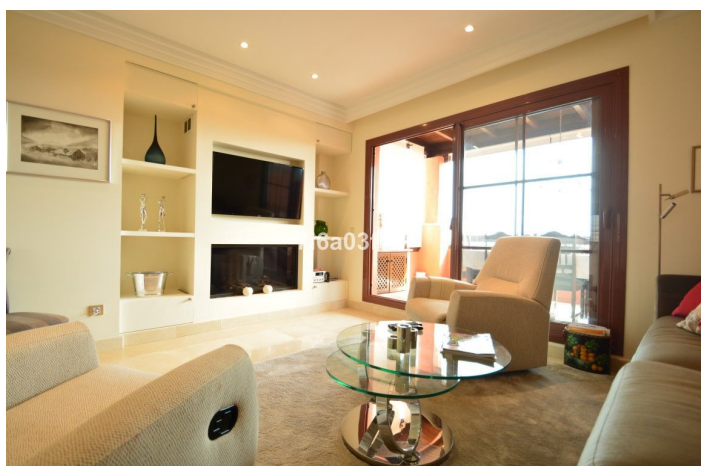
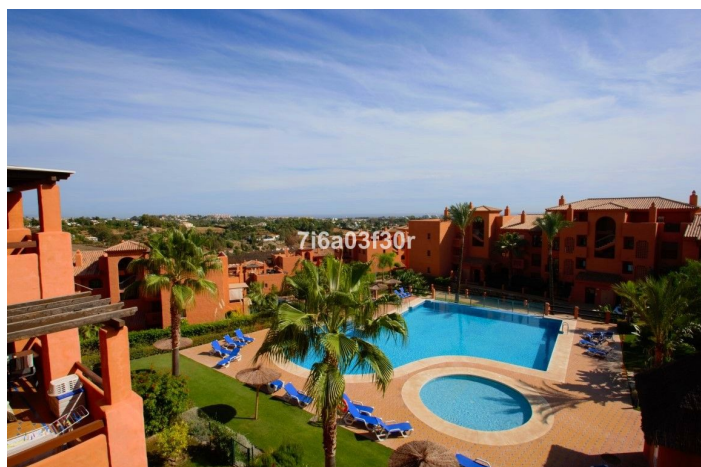
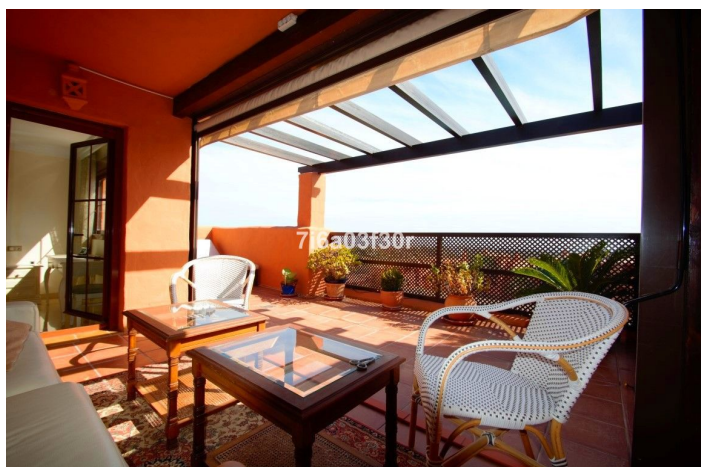




Ático en alquiler en Benahavís, Benahavís

2.400 - 2.400 €

Referencia: R4075708 Dormitorios: 3 Baños: 2 Construido: 242m² Terraza: 61m²





Costa del Sol, Benahavís

Amazing 3 bedroom duplex-penthouse decorated with a Scandinavian style, panoramic views to the sea and the mountain. *****Available from October until end of May*****

PROPERTY: Spacious duplex penthouse, decorated in a Scandinavian style, the distribution in the first floor is based in the living room area with gas fireplace and separate dining room, fully equipped modern kitchen with breakfast area, a bedroom-office, another double bedroom and a modern bathroom. The living and dining room have both direct access to the large terrace where you can enjoy views to the sea, mountains, pool area and the gardens. Beautiful luxurious duplex penthouse situated in the upmarket resort of Gazules del Sol. 3 Sunny terraces on different levels. 4 shared outdoor pools, and childrens pool . This property, with marble floors, boasts nice decoration and stylish quality furniture with everything you could want to make your holiday a perfect one. There are 3 excellent terraces on different levels with view to the pool area and panoramic views to the mountains and the Mediterranean. The terraces are furnished for al fresco dining or just relaxing and enjoying the sun with a cool drink. On the upper floor there is a master bedroom with bathroom en-suite and a covered terrace with fitted kitchen and barbecue. The master bedroom has direct access to one of the terraces and the master bathroom has a walk-in-shower. The shared bathroom has bath with shower. Both bathrooms have double sink, bidet and toilet.

COMPLEX: The penthouse, set within tropical gardens, offers a wonderful combination of breathtaking views of the mountains and the Mediterranean Sea, an easy access to golf courses and to the coast. Ideal for a holiday in the sun with family or friends, or a golfing break. For cycling enthusiasts, the property leads on to several magnificent cycling routes. The gated complex, with 24/24 security, has 4 outdoor swimming pools, with separate children's pool and a heated indoor pool in the sports complex, including jacuzzi, saunas, gym and a padel tennis court. From the secure underground parking, there is direct access to the apartment by lift or by steps. The nearest supermarket is right across the road so you don't even need the car to go shopping.

AREA: Benahavis is synonymous with food. It has the highest concentration of high class restaurants in the region and draws visitors by the thousands who come simply to savour the cuisine. It also has an extremely high percentage of residents who have found its situation and ambience irresistible. In spite of this, it has remained remarkably unspoiled, with winding narrow streets ill-suited to the motor car, and a picturesqueness which almost makes it seem like a specially-created film set. It stands 500 metres above sea level, 7 kilometres inland from the Guadalmina Golf Course, and is reached by driving through the rio Guadalmina gorge up into the hills. Its Moorish heritage is emphasised by the existence nearby of the ruined 11th Century castle of Montemayor. As its name implies, this Arab stronghold squats on top of the highest mountain in the locality, and anyone wishing to make the climb to visit the ruins and experience the truly sensational views of the coastline should be prepared for a strenuous but rewarding effort. A notable feature of the village is La Aldea. Almost a village within a village, La Aldea was the brainchild of the British sculptor, David Marshall, whose gallery is one of its main features however there are other art galleries in Benahavis. Though largely a recent creation, determined efforts have been made to make this enclave even more Andalucían than Benahavis itself, with marble fountains, antiques and old-fashioned doors and grilles. There are 7 fabulous golf courses and clubs in Benahavis for all abilities. All too often this is easier said than done, and the best alternative is to drive carefully to the Restaurante Los Faroles on calle Málaga. For those not ready for a heavy lunch there are numerous bars serving excellent tapas and even a small pizzeria .

DISTANCES: (Approximate) Distances: Approximate distances are : Benahavis Village - 3 KM San Pedro - 8 KM Puerto Banus - 17 KM Estepona - 18 KM Marbella - 30 KM Ronda - 60 KM Gibraltar - 65 KM Malaga Airport - 75KM Granada - 200 KM



Características:

Características

Terraza Cubierta
Ascensor
Cerca de Transporte
Terraza Privada
TV Satélite
Trastero - Almacén
Baño En-Suite
Suelos de Mármol
Doble acristalamiento
24 Horas Recepción
Armarios Empotrados
Solario
WiFi
Gimnasio
Sauna
Paddle Tennis
Pista de Tennis
Jacuzzi
Barbacoa
Domotica
Vistas
Vistas al Mar
Vistas a Montaña
Vistas Panorámicas

Piscina

Piscina Comunitaria
Piscina Cubierta
Children`s Pool

Jardín

Jardín Comunitario

Servicios Públicos

Electricidad
Agua Potable
Teléfono

Orientación

Sur

Posición

Cerca de Golf
Urbanización
Cerca de Tiendas
Cerca de Cuidad
Cerca de Colegios
Cerca de los Bosques
Cerca de Marina

Muebles

Sin Amueblar
Opcionales

Seguridad

Recinto Cerrado
Seguridad de 24 horas
Persianas Eléctricas
Portero Automático
Caja fuerte

Categoría

Lujo

Climatización

Aire Acondicionado
A/A Preinstalado
A/A Frio
A/A Caliente

Estado

Excelente estado de conservación

Cocina

Cocina Equipada

Aparcamiento

Parking Subterráneo