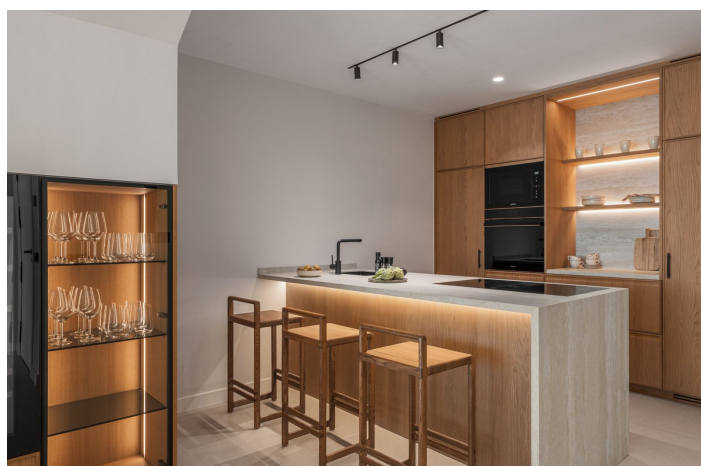
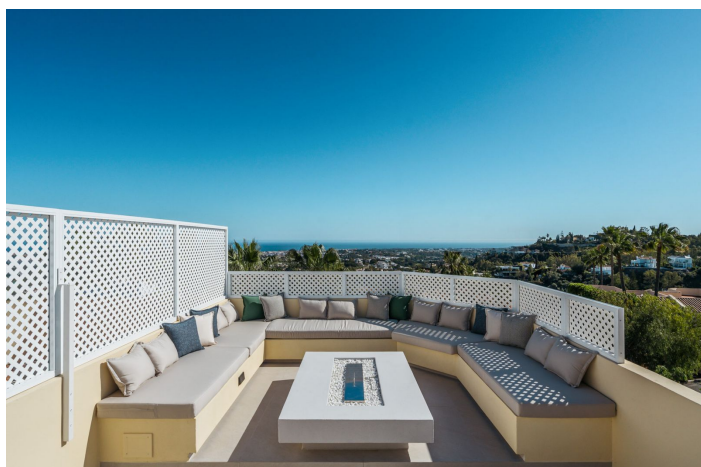




## Townhouse for sale in La Quinta, Benahavís

1,750,000 €

Reference: R5039128 Bedrooms: 3 Bathrooms: 3 Build Size: 164m<sup>2</sup> Terrace: 49m<sup>2</sup>





## Costa del Sol, La Quinta

This is a meticulously renovated three-level townhouse for sale located in the secure, well-maintained community of La Quinta Hills in Benahavís. Fully renovated in 2024, this property showcases a seamless blend of Mediterranean tranquility and Scandinavian minimalism, resulting in a warm, functional home with stunning design throughout. Offering a total built area of 212 square meters, the layout includes approximately 164 square meters of refined interior living space, complemented by 49 square meter rooftop solarium. This thoughtfully designed townhouse features three bedrooms and three bathrooms two of which are en-suite plus a guest toilet, providing ample comfort for residents and visitors alike. On the ground floor, the home opens up to a bright and spacious open-plan kitchen, dining, and living area. Custom-designed by a Danish studio, the kitchen is equipped with Smeg appliances and includes a stylish peninsula with a wine fridge and display cabinet. The living area is centered around a bioethanol fireplace from Pureline, adding a cozy element to the clean interior aesthetic. Large sliding glass doors connect the indoor space with a private garden terrace that includes a built-in barbecue, ideal for outdoor entertaining. The first floor is home to the master suite, where a super-king-size bed, walk-in wardrobe, and en-suite bathroom with sea views create a private, peaceful retreat. Two additional bedrooms on this level can serve as guest accommodations or a home office, and the guest bathroom features a convenient washer and dryer. Crowning the property is the rooftop solarium. From this elevated space, residents can enjoy panoramic views of the Mediterranean and the iconic La Concha mountain. Outfitted with a built-in lounge, bioethanol fireplace, bar area, outdoor shower, and sunbeds, this space invites year-round use and relaxation. Situated in La Quinta Hills, part of the prestigious La Quinta Golf & Country Club, the home benefits from a privileged hillside position with scenic views and a calm, residential atmosphere. The area predominantly consists of upscale villas and townhouses with modern or Andalusian-inspired architecture, making it popular among those seeking exclusivity and convenience. The renowned La Quinta Golf course, designed by Manuel Piñero, is just minutes away and features a 27-hole layout, clubhouse, restaurant, pro shop, and golf academy. Local amenities are within easy reach. The beaches near Puerto Banús are only a 10-minute drive, offering beach clubs like La Sala by the Sea and Ocean Club. For shopping and services, options such as El Corte Inglés, Marina Banús, and Supercor are close by. Dining choices nearby include Prado Halcones, Magna Café, and the Clubhouse Restaurant, each known for quality cuisine and a relaxed setting. Families will appreciate the proximity to esteemed educational institutions, including Aloha College and Atalaya International School, both of which offer bilingual programs and strong academic reputations. Connectivity is another advantage, with the AP-7 toll road and A-7 coastal highway providing smooth access to Marbella, Estepona, and Málaga Airport. Public transportation is available in nearby areas, ensuring residents remain connected without sacrificing the privacy and peace of La Quinta. This is a unique opportunity to own a refined property in a well-established area of Benahavís. It combines style, comfort, and location with quality craftsmanship and lifestyle-focused design, making it ideal for both permanent living and seasonal enjoyment.



## Features:

### Features

Ensuite Bathroom

Double Glazing

### Views

Sea Views

Mountain

Panoramic

Pool

### Parking

Private

### Orientation

South

### Furniture

Fully Furnished

### Category

Luxury

### Climate Control

U/F/H Bathrooms

### Security

Gated Complex