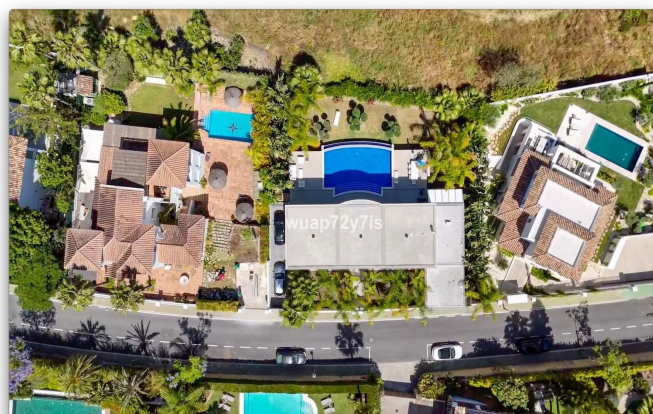
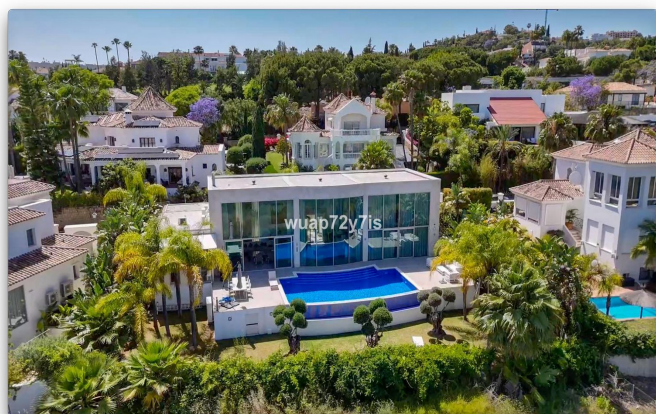




## Detached Villa for sale in Benahavís, Benahavís

3,750,000 €

Reference: R5050231 Bedrooms: 3 Bathrooms: 3 Plot Size: 794m<sup>2</sup> Build Size: 355m<sup>2</sup>





---

## Costa del Sol, Benahavís

Modern Mediterranean Villa with Sea Views, Infinity Pool & Sauna in La Quinta Perched in the peaceful hills of La Quinta, this stylish contemporary villa captures unobstructed views of the Mediterranean Sea and the iconic La Concha mountain. Designed for refined living, the property blends clean architectural lines with tranquil outdoor spaces, offering a private retreat just minutes from the energy of Marbella. The villa features a light-filled, open-plan interior where the living room, dining area, and fully equipped kitchen flow effortlessly together. High-end finishes and floor-to-ceiling windows bring the outside in, framing the stunning natural surroundings. With three spacious bedrooms—each with a sleek bathroom—the home is built for comfort and privacy. Wake up to the views, then unwind in your own private sauna after a day on the coast. Every detail is considered to create a calm and contemporary atmosphere. Outdoors, beautifully landscaped gardens surround an infinity-edge pool, sun terraces, and multiple alfresco dining and lounge spaces. Whether relaxing in the sun or entertaining guests under the stars, the outdoor layout is both functional and luxurious. Additional features include secure private parking for at least two cars. Located in the prestigious La Quinta area, this villa benefits from one of the most sought-after addresses in Benahavis. La Quinta is renowned for its peaceful surroundings, world-class golf courses, and elevated position offering some of the best views on the Costa del Sol. Just a short drive from Puerto Banús, Marbella town, and the beach, the area combines tranquility with accessibility—ideal for year-round living or a high-end holiday home.





## Features:

### Features

Private Terrace  
Ensuite Bathroom  
Fitted Wardrobes  
WiFi  
Sauna

### Views

Sea Views  
Mountain  
Panoramic  
Country  
Garden  
Pool

### Pool

Private

### Garden

Private

### Category

Holiday Homes  
Investment  
Golf  
Luxury  
Contemporary

### Orientation

South East

### Setting

Close To Golf  
Close To Shops  
Close To Town  
Close To Schools

### Furniture

Optional

### Security

Safe

### Climate Control

Air Conditioning

### Condition

Excellent

### Kitchen

Fully Fitted

### Parking

More Than One