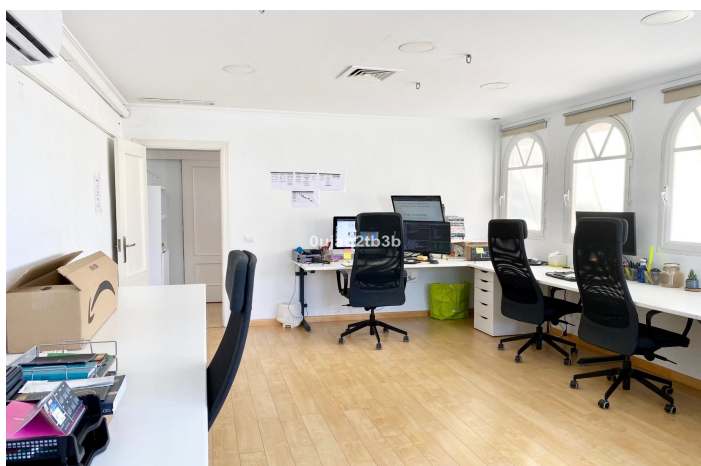
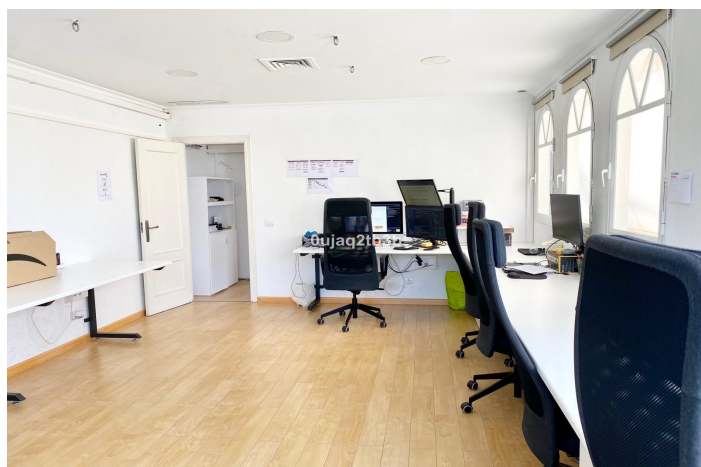




Office for rent in Nueva Andalucía, Marbella

1,100 - 1,100 €

Reference: R4986718 Bedrooms: 2 Bathrooms: 1 Build Size: 70m²





Costa del Sol, Nueva Andalucía

Spacious Office for Long-Term Rent in Prime Golf Valley Location We are pleased to present this expansive office space, strategically situated in the prestigious Aloha Gardens complex, in the heart of the sought-after Golf Valley. This office offers a unique layout with two distinct areas, providing versatility for a variety of business needs. Key Features:

Prime Location: Enjoy excellent visibility and accessibility in a high-demand area, surrounded by other professional offices, ensuring a vibrant business environment.

Separation from Residential Units: The office section is distinctly separated from residential components of the building, fostering a focused work atmosphere.

Abundant Natural Light: The office boasts large windows on three sides, allowing for ample natural light which enhances productivity and creates an inviting atmosphere.

Convenient Accessibility: The first-floor location provides easy access for both clients and employees. The surrounding area offers numerous parking spaces, along with a taxi stop conveniently located at the front of the building.

Signage Opportunity: Capitalize on the potential for high visibility with a large billboard opportunity on the façade, perfect for promoting your business.

Comfort and Amenities: Each office is equipped with air conditioning to ensure a comfortable working environment year-round. Additionally, the space includes a sizable full bathroom, further enhancing its functionality. This office space represents a rare opportunity to establish your business in one of the most prestigious locations in the region. We invite you to schedule a viewing and explore the potential of this remarkable office space.



Features:

Features

Near Transport
Marble Flooring
Fiber Optic

Views

Garden
Courtyard
Urban
Street

Furniture

Not Furnished

Parking

Street

Orientation

South
West

Setting

Commercial Area
Close To Golf
Urbanisation
Close To Shops
Close To Schools

Kitchen

Not Fitted

Utilities

Electricity
Drinkable Water

Climate Control

Air Conditioning

Condition

Excellent

Garden

Communal