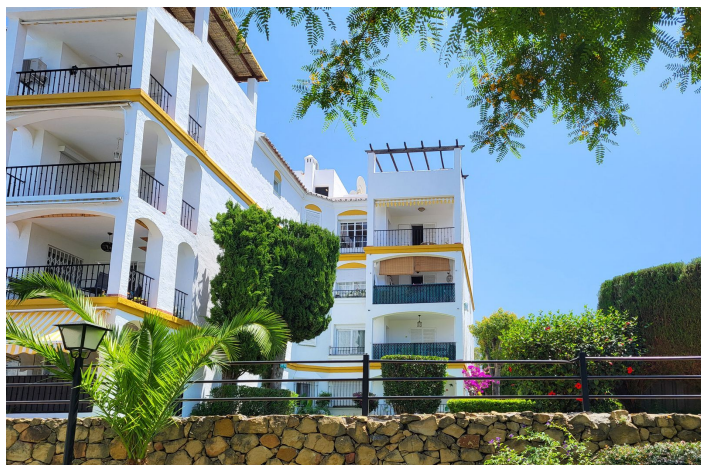




Penthouse for sale in El Paraiso, Estepona

330,000 €

Reference: R5068357 Bedrooms: 2 Bathrooms: 2 Build Size: 110m² Terrace: 44m²





Costa del Sol, El Paraiso

Exceptional Penthouse Investment Opportunity – New Golden Mile, Estepona Located in the sought-after Atalaya del Golf complex on Estepona's New Golden Mile, this bright and spacious 2-bedroom, 2-bathroom penthouse offers a rare combination of stunning panoramic views, generous living space, and unbeatable convenience. Set in the highest position of the community, the apartment boasts spectacular sea views stretching to Gibraltar and Africa, with picturesque sights of La Concha and the Estepona mountains. It features east and west-facing aspects, flooding the interior with natural light throughout the day. Spacious living/dining area with terrace | Independent kitchen with breakfast area, plus laundry room and storage Expansive private solarium (37 m²) with breathtaking 360° views | Approx. 154 m² total built area (110 m² apartment + 7 m² terrace + 37 m² solarium) Covered parking included | Well-maintained communal gardens and large swimming pool | Recently renovated and repainted community, offering a fresh and modern exterior | The property is in excellent structural condition, requiring only internal modernisation to reach its full potential. It's located just a 5-minute walk from Diana Park Shopping Centre, which offers supermarkets, pharmacies, veterinary clinics, cafés, bookstores, and more. Perfectly situated between Marbella and Estepona, and close to San Pedro, Guadalmina, and El Paraíso, this is a prime opportunity for investors or homebuyers seeking a flexible residence with leaseback options (1 to 3 years available).



Features:

Features

Lift
Private Terrace
Storage Room

Setting

Commercial Area
Close To Golf
Urbanisation
Close To Sea
Close To Shops
Close To Schools

Furniture

Fully Furnished

Parking

Covered

Orientation

East
West

Condition

Good

Garden

Communal

Category

Golf

Views

Sea Views
Mountain

Pool

Communal

Security

Gated Complex
Entry Phone