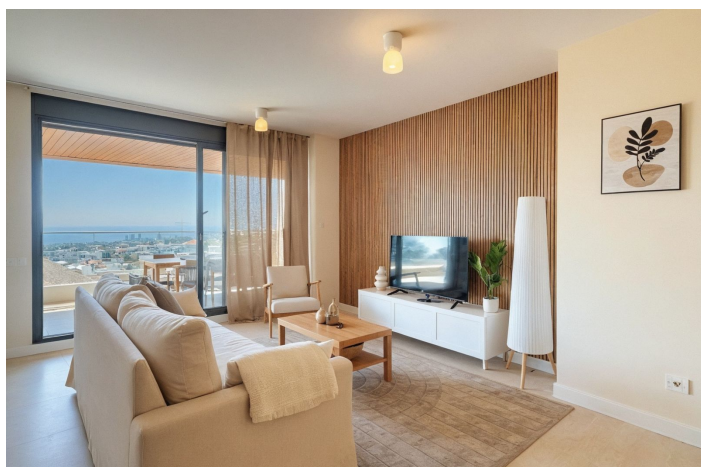




## Middle Floor Apartment for sale in Estepona, Estepona

525,000 €

Reference: R5122285 Bedrooms: 2 Bathrooms: 2 Build Size: 139m<sup>2</sup> Terrace: 36m<sup>2</sup>





---

## Costa del Sol, Estepona

Beautiful 2-bedroom, 2-bathroom apartment in the exclusive brand new urbanization of Vanian Views in Estepona. The apartment features two generously sized bedrooms, both filled with natural light and decorated in soothing neutral tones which provides direct access to a private terrace, offering the perfect spot to enjoy your morning coffee or unwind in the evening. The two bathrooms are beautifully designed with contemporary fixtures with underfloor heating. The open-plan living room, creates an inviting and serene space for relaxation. It opens seamlessly onto a large private terrace equipped with comfortable outdoor seating, ideal for al fresco dining or simply soaking in the panoramic sea views. The modern kitchen, open to the living area, is fully equipped with high-quality appliances and ample storage, making it a functional yet stylish space for cooking and entertaining. Vanian Views is a modern and exclusive residential development, combining semi-oval architectural design, breathtaking sea views, and an exceptional location next to Selwo Natural Park. It is an ideal choice for those seeking a contemporary home in a natural, well-connected setting—whether as a primary residence, a second home, or a high-potential rental investment. The community offers an outdoor swimming pool, a co-working area, gym and spa.



## Features:

### Features

Covered Terrace  
Lift  
Private Terrace  
Storage Room  
Ensuite Bathroom  
Double Glazing  
Fitted Wardrobes  
Gym  
Sauna  
Utility Room  
Jacuzzi  
Barbeque

### Views

Sea Views  
Mountain  
Panoramic  
Country  
Street

### Pool

Communal  
Heated

### Garden

Communal

### Energy Rating

B

### Orientation

South

### Setting

Close To Sea  
Close To Shops  
Close To Town  
Close To Schools

### Furniture

Fully Furnished

### Security

Gated Complex  
Electric Blinds  
Entry Phone

### CO2 Emission Rating

B

### Climate Control

Air Conditioning  
U/F/H Bathrooms

### Condition

New Build

### Kitchen

Partially Fitted  
Kitchen-Lounge

### Parking

Private