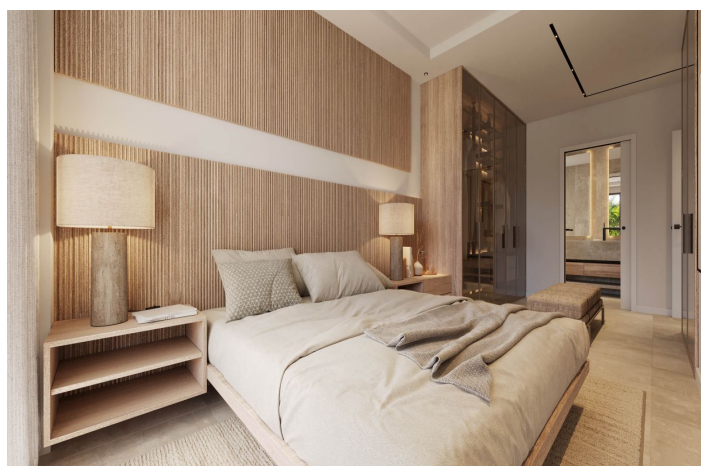




## Duplex for sale in Estepona, Estepona

389,000 - 479,000 €

Reference: R5133181   Bedrooms: 1 - 2   Bathrooms: 1 - 2   Build Size: 51m<sup>2</sup> - 55m<sup>2</sup>   Terrace: 18m<sup>2</sup> - 48m<sup>2</sup>





---

## Costa del Sol, Estepona

This is not simply a place to live. It's a lifestyle ecosystem. From sunrise swims in your private pool to sunset walks along the coastal path, this is more than just a home — it's a statement. Located in the vibrant heart of Estepona's emerging west side, this thoughtfully designed, low-density development introduces a collection of 78 luxurious 1, 2, 3, and 4-bedroom apartments, brought to life with vision and care. Surrounded by lush vegetation and bathed in natural light, each residence offers a personal retreat from the ordinary. There's a quiet elegance to the interiors here. A soothing palette of neutral tones, natural textures of wood and stone, and flowing spaces with floor-to-ceiling glass doors that dissolve the boundary between indoors and out. Architecture in this enclave enhances the natural surroundings. Smart orientation and low-density planning ensure optimal privacy, abundant sunlight, and expansive green views. Each apartment harmonizes with its environment. Sculptural yet understated, curved terraces mimic the coastline's natural rhythm, while communal areas are deeply rooted in nature, featuring green roofs, layered planting, and the gentle shade of palm trees. This development offers resort-style amenities, discreetly integrated into the landscape. A tranquil spa hidden behind flowering stone walls, a serene coworking space with garden views and filtered light, and a fitness suite where glass walls reveal trees instead of treadmills. Start your day with a peaceful swim in the heated indoor pool or recharge in the refreshing outdoor saltwater pool. Unwind in the spa with a sense of stillness that money can't buy, or share a fireside drink with like-minded neighbours as the evening sets in.



## Features:

### Features

Covered Terrace  
Lift  
Private Terrace  
Ensuite Bathroom  
Double Glazing  
Fitted Wardrobes  
Solarium  
Gym  
Sauna  
Access for people with reduced mobility

### Condition

New Build

### Security

Gated Complex  
Entry Phone

### Climate Control

Cold A/C  
Hot A/C  
U/F/H Bathrooms

### Pool

Communal  
Heated  
Indoor  
Private

### Parking

Garage  
Private

### Views

Garden  
Pool

### Garden

Communal  
Private

### Category

New Development