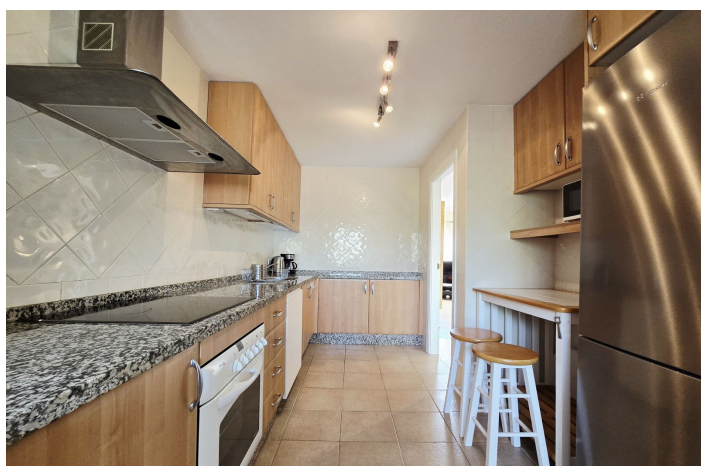




## Penthouse for sale in Elviria, Marbella

419,000 €

Reference: R5136586 Bedrooms: 2 Bathrooms: 2 Build Size: 105m<sup>2</sup> Terrace: 40m<sup>2</sup>







---

## Costa del Sol, Elviria

Few places in East Marbella boast such spectacular gardens, large communal pools, and extensive amenities like this resort-style development. Amid the buildings, planters, and walkways, you'll find eucalyptus trees towering over 50 metres, more than 100 varieties of ornamental plants, colourful bougainvilleas, and century-old cork oaks. The housing estate is just 400 metres from the Santa María Golf & Country Club's Clubhouse, 500 metres from Elviria's centre with all its shops and services, and 1,200 metres from the sandy beach. Therefore, it's a true luxury to live here permanently or to own an apartment for holidays. This bright two-storey penthouse is in good condition and comprises a large living and dining room with access to a spacious terrace. The kitchen is located at the rear, as is the second bedroom. A complete family bathroom is also on this level. Upstairs, the master suite is quite splendid with an open feel and a delightful private terrace offering great panoramic views over the gardens and the neighbourhood. The complex is fully gated, providing 24-hour security and concierge services. All apartments come with an underground parking space and a practical storage room. The lift takes you directly to the door; everything is designed to ensure maximum comfort and an excellent lifestyle for residents.



## Features:

### Features

Lift  
Near Transport  
Private Terrace  
Storage Room  
Ensuite Bathroom  
Marble Flooring  
Double Glazing  
24 Hour Reception  
Fitted Wardrobes  
Utility Room  
Fiber Optic

### Views

Mountain  
Panoramic  
Garden  
Pool

### Pool

Communal  
Children`s Pool

### Garden

Communal  
Landscaped

### Category

Holiday Homes  
Investment  
Golf

### Orientation

South East

### Setting

Close To Golf  
Urbanisation  
Close To Sea  
Close To Shops

### Furniture

Optional

### Security

Gated Complex  
24 Hour Security

### Energy Rating

E

### Climate Control

Cold A/C  
Hot A/C

### Condition

Good

### Kitchen

Fully Fitted

### Parking

Underground  
Garage  
Private

### CO2 Emission Rating

E