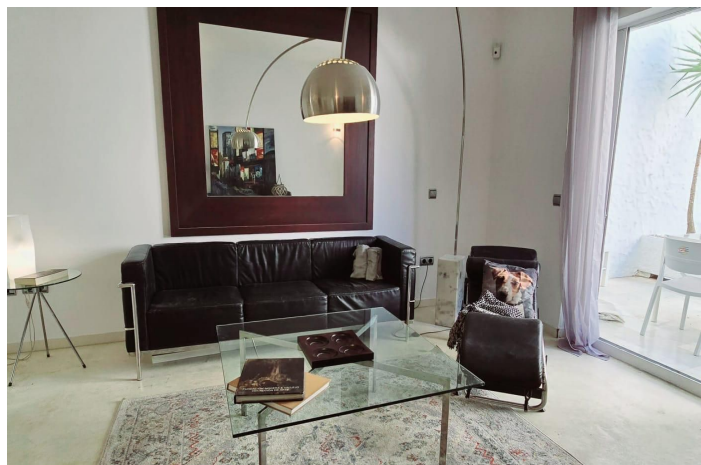




Dúplex en alquiler en Marbella, Marbella

2.200 - 2.200 €

Referencia: R5153269 Dormitorios: 2 Baños: 2 Terreno: 100m² Construido: 97m²





Costa del Sol, Marbella

This charming ground floor duplex apartment, located in the exclusive Pueblo Arabesque residential complex, offers the perfect combination of style, comfort, and security. With its Arabic-influenced architecture, this complex is located in the heart of Nueva Andalucía, Marbella, a privileged location close to shops, restaurants, and golf courses, and just a few minutes from the most exclusive beaches in the area. The apartment has two spacious bedrooms, both with en-suite bathrooms, providing maximum privacy and comfort. The open-plan kitchen blends seamlessly with the double-height living-dining room, creating a bright and airy atmosphere ideal for enjoying family life or entertaining guests. Large windows allow natural light to flow throughout the day, and direct access to the terrace, overlooking the garden, invites you to enjoy the Mediterranean climate. From the terrace, you have direct access to the garden and the communal pool, creating an ideal environment for relaxation and leisure. The apartment also has a guest toilet for added convenience, and comes with an assigned outdoor parking space right outside the apartment door, providing easy access and convenience. In addition, for your peace of mind, it is equipped with an anti-theft alarm system, ensuring security at all times. Pueblo Arabesque is the ideal place for those seeking a sophisticated home in a peaceful and exclusive setting, without sacrificing proximity to all the amenities and attractions of Marbella. Additional information: This exceptional property is available immediately. You have at your disposal the Abbreviated Informative Document. Tax expenses (ITP). For more information or to schedule a visit, please do not hesitate to contact us. ERE



Características:

Características

Suelos de Mármol

Suelo de Madera

Estado

Buen estado de conservación

Cocina

Cocina Equipada

Orientación

Orientación Noroeste

Piscina

Piscina Comunitaria

Calificación energética

E

Climatización

Calefacción Central.

Muebles

Completamente Amueblada

CO2 Emission Rating

E