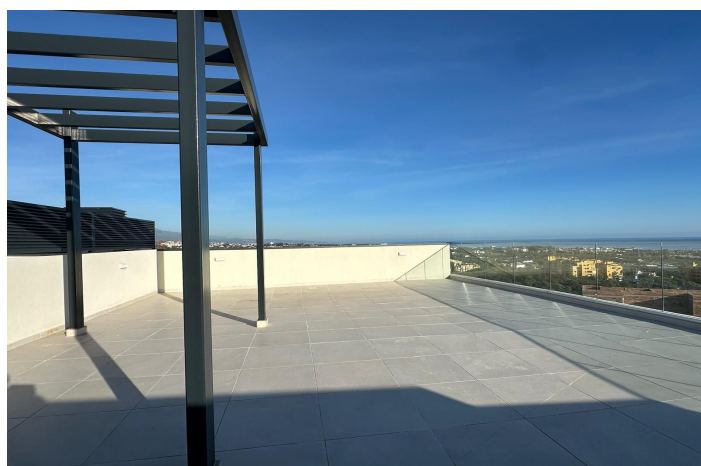
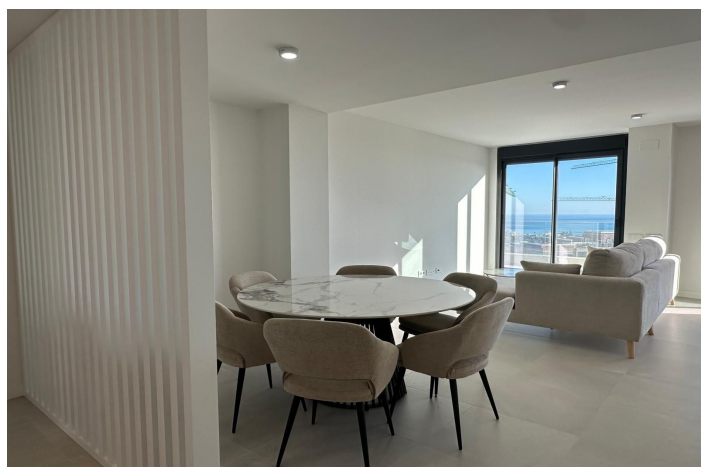




Ático en alquiler en Selwo, Estepona

2.900 - 2.900 €

Referencia: R5272504 Dormitorios: 2 Baños: 2 Construido: 112m² Terraza: 100m²





Costa del Sol, Selwo

Step into luxury with this brand new penthouse offering breathtaking panoramic sea views in the prestigious Selwo area! This stunning property, just completed in 2025, is now available for rent and promises the ultimate in modern coastal living.

The open-concept design of the spacious living room seamlessly flows into the fully equipped kitchen, all leading out to a beautiful terrace where you can take in the sweeping sea views from Marbella to Gibraltar. The master bedroom boasts a wardrobe corner, private bathroom, and direct access to the terrace, allowing you to wake up to the mesmerizing sea views every morning. The second bedroom is equally impressive with a generous built-in wardrobe and a guest bathroom.

The exterior spaces are truly exceptional, with a 32m² terrace at the apartment level and a magnificent 63m² rooftop terrace offering unparalleled sea and mountain views.

This state-of-the-art residence, completed in 2025, features amenities such as an outdoor swimming pool, a well-equipped gym, and a welcoming social club for residents to enjoy.

Conveniently located just 2 minutes from Atlas School, 5 minutes from Mercadona, Aldi, and Lidl, and a short 3-minute drive to the beach, this penthouse offers the perfect blend of tranquility and accessibility. Additionally, it is just a 15-minute drive to the vibrant Puerto Banus and 10 minutes to Estepona City Centre.

For those seeking leisure and entertainment, the property is within walking distance to an array of restaurants and sports facilities including gyms, paddle tennis, and tennis courts.

2 underground parking spaces and storage included!

This extraordinary penthouse is available for rent immediately, and a video tour is available upon request. Don't miss out on this unparalleled opportunity to experience coastal luxury living at its finest.



Características:

Características

Ascensor
Terraza Privada
Trastero - Almacén
Baño En-Suite
Doble acristalamiento
Armarios Empotrados
Solario
Gimnasio
Lavadero

Vistas

Vistas al Mar
Vistas a Montaña
Vistas Panorámicas

Piscina

Piscina Comunitaria

Seguridad

Recinto Cerrado

Orientación

Sur

Posición

Urbanización
Cerca de Colegios

Muebles

Completamente Amueblada

Aparcamiento

Parking Subterráneo
More Than One

Climatización

Aire Acondicionado

Estado

Excelente estado de conservación
Nueva Obra

Cocina

Cocina Equipada

Categoría

Lujo