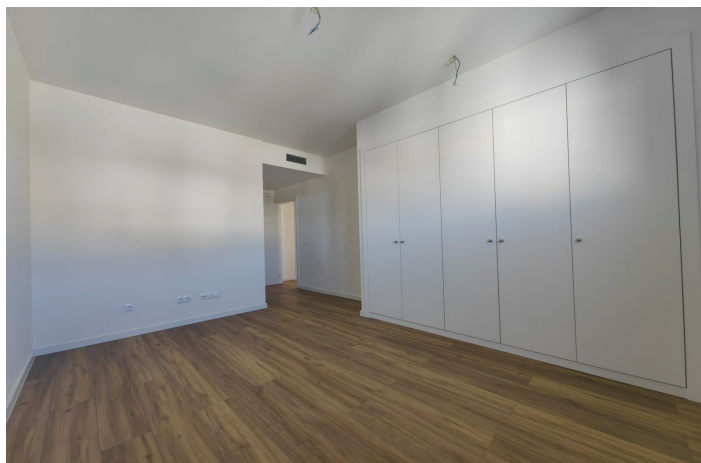




Penthouse for sale in Estepona, Estepona

545,000 €

Reference: R5295277 Bedrooms: 2 Bathrooms: 2 Build Size: 120m² Terrace: 35m²





Costa del Sol, Estepona

Brand New South-Facing Penthouse with Panoramic Sea & Mountain Views – Habitat Valle Romano

Discover this stunning, brand new penthouse located in the contemporary development of Habitat Valle Romano, set within the prestigious Valle Romano Golf Estate. Designed for modern Mediterranean living, this spacious property offers an exceptional blend of comfort, style, and lifestyle amenities.

The penthouse features two generous bedrooms and two bathrooms, including a master suite with en-suite bathroom, finished to a high standard throughout. The bright open-plan kitchen, dining, and living area flows seamlessly onto an impressive south-facing L-shaped terrace, ideal for outdoor dining, entertaining, or simply relaxing while enjoying panoramic views of the Costa del Sol coastline, surrounding mountains, and the Mediterranean Sea.

Residents benefit from a secure and private environment, with underground parking and a storage room included. The development offers outstanding communal facilities, including a large outdoor swimming pool, fully equipped gym, communal work and entertainment space with a fitted kitchen, outdoor fitness circuit with exercise machines, chill-out areas, and a pétanque court—all designed to enhance everyday living.

Valle Romano enjoys a privileged location, just 10 minutes by car from Estepona Old Town, the marina, beaches, and all local amenities, while being surrounded by nature and golf.

This penthouse is ideal as a family holiday home, a full-time residence, or a high-potential investment property in one of Estepona's most up-and-coming areas



Features:

Features

Lift
Private Terrace
Storage Room
Ensuite Bathroom
Double Glazing
Fitted Wardrobes
Gym
Basement
Fiber Optic
Access for people with reduced mobility

Views

Sea Views
Mountain
Panoramic
Country
Garden
Golf Views

Pool

Communal
Children`s Pool

Garden

Communal
Landscaped
Easy Maintenance

Utilities

Electricity
Drinkable Water

Orientation

South

Setting

Close To Port
Urbanisation
Close To Sea
Close To Shops
Close To Town
Close To Schools

Furniture

Not Furnished

Security

Gated Complex
Entry Phone

Category

Holiday Homes
Investment
Golf
Luxury
Resale
Contemporary

Climate Control

Air Conditioning
Cold A/C

Condition

Excellent
New Build

Kitchen

Partially Fitted

Parking

Underground
Private