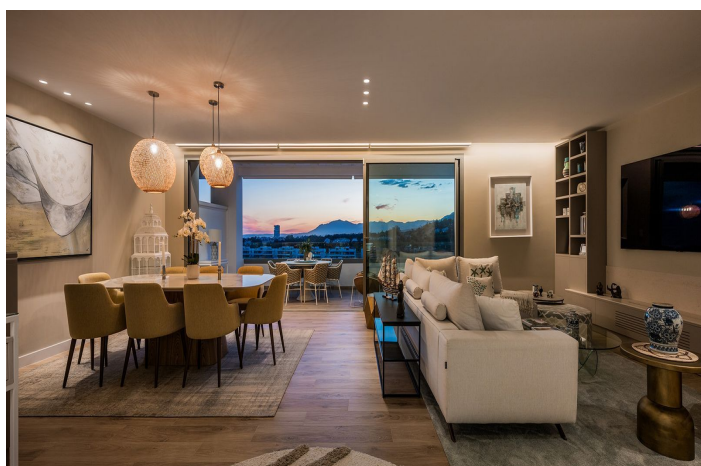
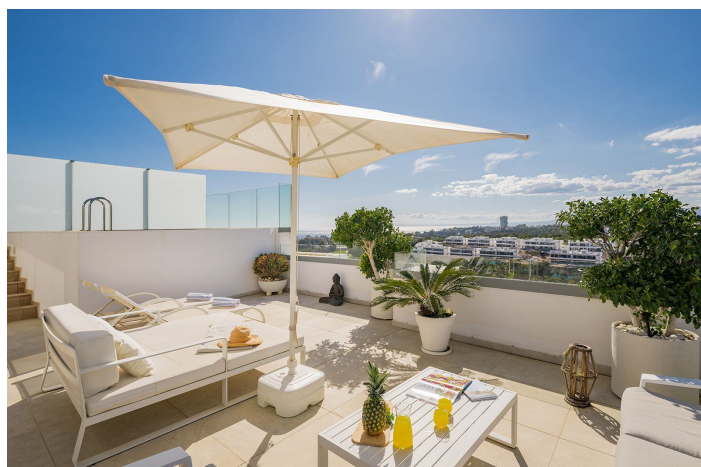




## Penthouse for sale in Santa Clara, Marbella

2,600,000 €

Reference: R4346290 Bedrooms: 4 Bathrooms: 4 Build Size: 213m<sup>2</sup> Terrace: 173m<sup>2</sup>





---

## Costa del Sol, Marbella

UNIQUE PENTHOUSE | SOUL SUNSET | SANTA CLARA GOLF | POOL | SEA, CITY & MOUNTAIN VIEWS The video must be seen! Welcome to your new home in Marbella - where comfort meets style in a stunning setting. This spacious 4-bedroom corner penthouse is all about relaxed luxury, tucked away in a beautiful green area surrounded by top golf courses and elegant homes. Located in the sought-after Soul Marbella community, you'll also enjoy access to 5-star hotel-style services that make everyday living feel like a holiday. Set over two levels, the 213 m<sup>2</sup> interior offers a bright and welcoming living space with a modern electric fireplace, a generous dining area, and a sleek, fully fitted kitchen with NEFF appliances. The southwest-facing bedrooms are filled with natural light, and the stylish bathrooms have been thoughtfully designed for both comfort and convenience. One of the best parts of this home is the outdoor space - and there's plenty of it. With 173 m<sup>2</sup> of sunny terraces, including a huge rooftop solarium, you'll have everything you need to soak up the Mediterranean lifestyle. Lounge by your private pool, unwind in the chill-out zones, or host family and friends in the outdoor kitchen with a built-in BBQ and dining area - all with fantastic sea and golf views. We focus on quality homes near Marbella's best beaches and golf courses, and with over 30 years of experience in construction and real estate, we're here to help you find the right property. If you'd like more details on this stunning home - including floor plans, specs, or amenities i Soul Marbella just reach out. We're always available and happy to help!



## Features:

### Features

Covered Terrace  
Lift  
Private Terrace  
Storage Room  
Ensuite Bathroom  
Double Glazing  
24 Hour Reception  
Fitted Wardrobes  
Solarium  
Gym  
Sauna  
Utility Room  
Wood Flooring  
Barbeque  
Domotics

### Views

Sea Views  
Mountain  
Panoramic  
Garden  
Pool  
Golf Views

### Pool

Communal  
Indoor  
Private  
Children`s Pool

### Garden

Communal  
Landscaped

### Category

Golf  
Luxury  
Contemporary

### Orientation

South  
West  
South West

### Setting

Close To Golf  
Urbanisation  
Close To Schools

### Furniture

Optional

### Security

Gated Complex  
24 Hour Security  
Alarm System  
Electric Blinds  
Entry Phone

### Climate Control

Air Conditioning  
Cold A/C  
Hot A/C  
Fireplace  
U/F Heating  
U/F/H Bathrooms

### Condition

Excellent

### Kitchen

Fully Fitted

### Parking

Underground  
Garage  
More Than One