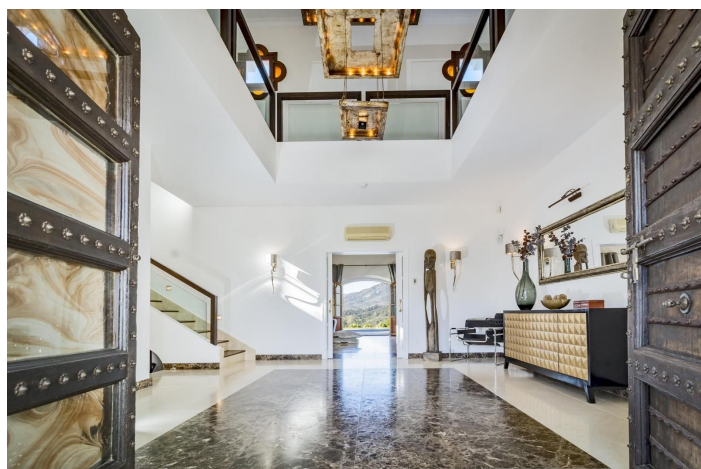




Detached Villa for rent in Benahavís, Benahavís

16,000 - 16,000 €

Reference: R4955842 Bedrooms: 4 Bathrooms: 4 Plot Size: 1,290m² Build Size: 420m²





Costa del Sol, Benahavís

Nestled within the prestigious gated community of Puerto del Almendro, this luxurious villa offers an unparalleled living experience. With breathtaking panoramic views that stretch across the sea, mountains, and cityscape, this property is a true sanctuary for tenants seeking both tranquillity and sophistication. Situated at the pinnacle of exclusivity, this villa combines elegance with the natural beauty of its surroundings, creating a haven of serenity and style.

Spanning an impressive 420m², this villa boasts four spacious bedrooms and three meticulously designed bathrooms, complemented by an additional guest toilet. The interiors are a harmonious blend of modernity and comfort, featuring a fully fitted and equipped open-plan kitchen, a separate dining room, and a cosy living room complete with a fireplace. Every detail has been thoughtfully curated, from the air conditioning and central heating to the fitted wardrobes and utility room, ensuring a lifestyle of convenience and luxury.

The outdoor spaces are equally captivating, with a private pool, garden and outdoor jacuzzi offering a perfect retreat for relaxation or entertaining guests. The covered and private terraces provide the ideal setting to enjoy the stunning sea, mountain, and garden views.

Located near essential amenities, transport links, and recreational facilities, this villa is perfectly positioned for those who value both accessibility and exclusivity. Proximity to golf courses, beaches, schools, and vibrant dining options further enhances its appeal. In a secure gated community, this property ensures peace of mind while delivering an exceptional standard of living.



Features:

Features

Covered Terrace
Near Transport
Private Terrace
Storage Room
Fitted Wardrobes
Utility Room
Jacuzzi

Views

Sea Views
Mountain
Panoramic
Garden
Pool

Pool

Private

Garden

Private

Category

Luxury

Orientation

South

Setting

Close To Golf
Close To Shops
Close To Town
Close To Schools

Furniture

Fully Furnished

Security

Gated Complex

Energy Rating

C

Climate Control

Air Conditioning
Fireplace
Central Heating

Condition

Excellent

Kitchen

Partially Fitted
Kitchen-Lounge

Parking

Private

CO2 Emission Rating

D