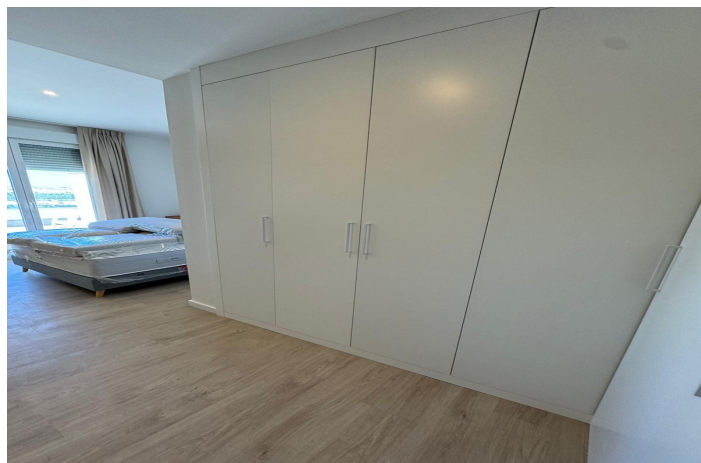
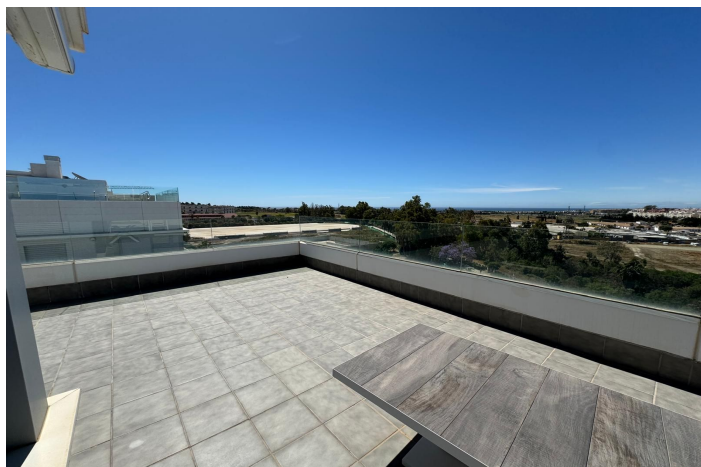
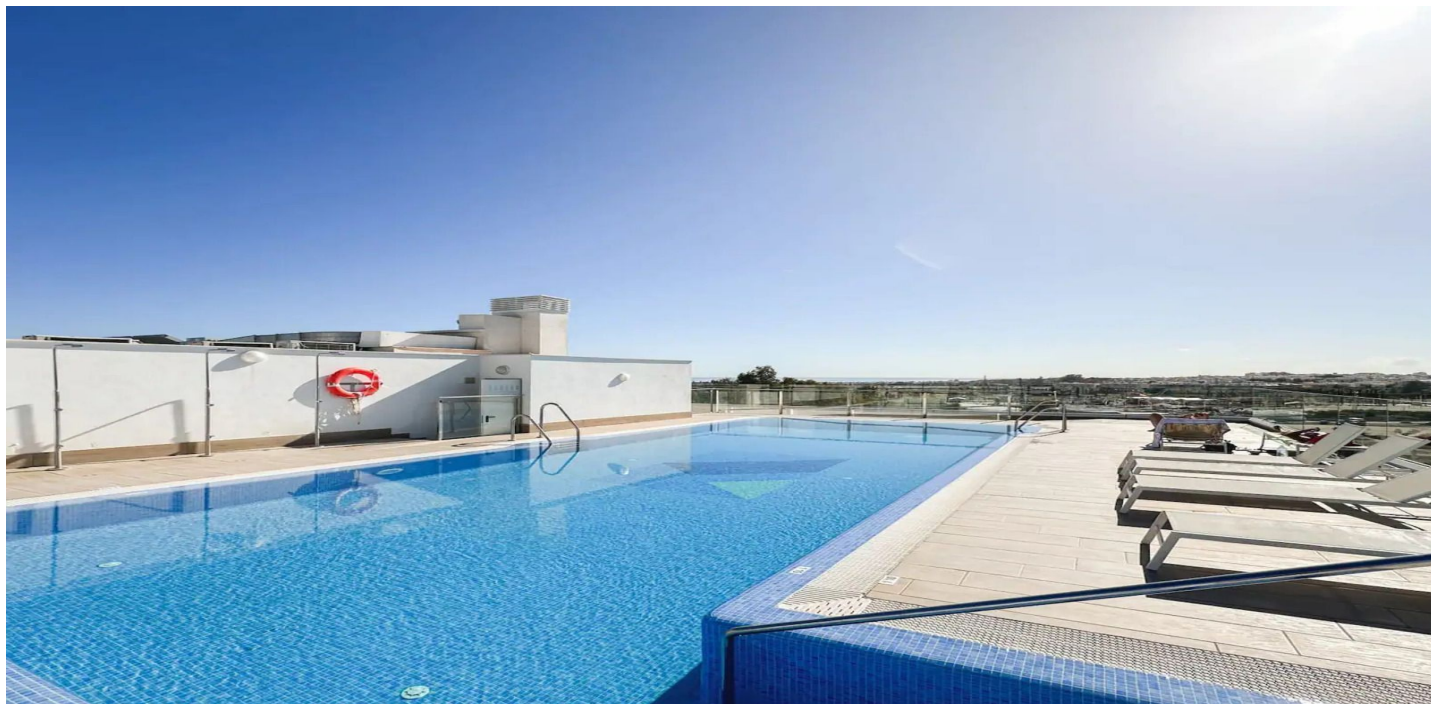




## Ático en alquiler en Nueva Andalucía, Marbella

4.000 - 4.000 €

Referencia: R4753708   Dormitorios: 4   Baños: 2   Construido: 117m<sup>2</sup>   Terraza: 100m<sup>2</sup>





---

## Costa del Sol, Nueva Andalucía

Presenting The Best Positioned Luxurious Penthouse in Jardines de Guadaiza Discover contemporary living at its finest in this immaculately renovated penthouse, nestled within the sought-after urbanization of Jardines de Guadaiza. Situated in the vibrant new district of Nueva Andalucía, known as La Campana, this property is a true gem in a prime residential location. Here, you'll find yourself enveloped by a tapestry of restaurants, boutiques, golf courses, and other conveniences, all within a leisurely stroll. Additionally, you're just a short drive away from the beloved locales of San Pedro, Puerto Banus Harbour, and Puente Romano. This modern apartment underwent a top-tier renovation in 2022, showcasing a blend of elegance and functionality. It boasts an airy living space seamlessly integrated with an open-plan kitchen, along with two generously sized bedrooms and bathrooms. What truly sets this property apart is the magnificent terrace, spanning over 40 square meters. This outdoor oasis not only features an invigorating outdoor shower but also offers direct access from every room, providing breathtaking vistas of the Mediterranean Sea and the iconic La Concha mountain. Moreover, you'll relish the ease of accessing the community swimming pool, conveniently located on the same level, offering you panoramic vistas that are nothing short of spectacular. The building's communal areas are equally impressive, encompassing a fully equipped gym, tranquil chillout zones, and a communal room complete with a kitchen, perfect for hosting gatherings and events. Positioned in a privileged location, with proximity to schools, golf courses, and excellent transportation links, this property stands as an ideal year-round residence.



## Características:

### Características

Terraza Cubierta  
Ascensor  
Cerca de Transporte  
Terraza Privada  
Baño En-Suite  
Armarios Empotrados  
WiFi  
Gimnasio  
Sótano  
Access for people with reduced mobility

### Vistas

Vistas al Mar  
Vistas a Playa  
Vistas Urbanas

### Piscina

Piscina Comunitaria

### Seguridad

Recinto Cerrado

### Categoría

Casas de vacaciones

### Orientación

Sur

### Posición

Cerca de Golf  
Urbanización  
Cerca del Mar  
Cerca de Tiendas  
Cerca de Colegios

### Muebles

Completamente Amueblada

### Aparcamiento

Parking Subterráneo

### Climatización

Aire Acondicionado  
A/A Frio  
A/A Caliente

### Estado

Excelente estado de conservación

### Cocina

Cocina Equipada

### Servicios Públicos

Electricidad