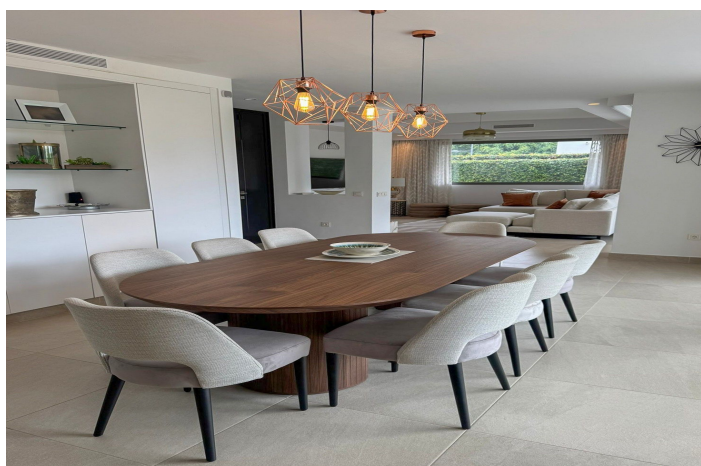




Villa - Chalet en alquiler en Estepona, Estepona

9.000 - 9.000 €

Referencia: R4675720 Dormitorios: 6 Baños: 5 Terreno: 550m² Construido: 306m² Terraza: 200m²





Costa del Sol, Estepona

AVAILABLE FROM SEPTEMBER 2025 This luxurious villa is a haven for families seeking the perfect blend of comfort and recreation. Situated right next to the El Campanario Clubhouse, a prestigious luxury resort, you'll have exclusive access to sports facilities, kids clubs, a spa, tennis courts, and a top-notch restaurant, all just steps away from your front door. Boasting a privileged location, this villa provides unparalleled convenience with easy access to restaurants, bars, and supermarkets within walking distance. For golf enthusiasts, two nearby golf courses beckon, and the sandy beaches and beach clubs like Salduna, Barbillón, Trocadero, and El Ancla are just a short away. Step into the lap of luxury with spacious and modern bedrooms adorned with large king-size beds and opulent Egyptian cotton bedding. The en-suite bathrooms are a pampering retreat, featuring large walk-in showers, a master bath with a tub, plush towels, bathrobes, and essential toiletries, ensuring a 5-star hotel experience within the comfort of your own villa. For those who relish al fresco dining, this villa is a paradise. Enjoy your meals by the lush and private pool or elevate your dining experience at the rooftop outdoor kitchen, offering a perfect setting for balmy Mediterranean evenings with breathtaking sea views. Entertainment knows no bounds in this villa, featuring a private heatedpool, outdoor kitchen, roof terrace, cinema room, games room, barbecue, and an advanced alarm system for added security. With amenities like restaurants and bars within walking distance, short drives to the beach and supermarkets, this villa seamlessly combines convenience with luxury. Be among the first to experience the charm of this Marbella holiday retreat, enhanced by 24/7 round-the-clock service.



Características:

Características

Terraza Privada

Armarios Empotrados

Vistas

Vistas Panorámicas

Piscina

Piscina Privada

Seguridad

Alarma

Calificación energética

C

Orientación

Sur

Posición

Cerca del Mar

Muebles

Completamente Amueblada

Aparcamiento

Parking Privado

CO2 Emission Rating

D

Climatización

Aire Acondicionado

Estado

Excelente estado de conservación

Jardin

Jardín Privado

Categoría

Lujo